

## Series DAS Dirt & Air Separator

Armstrong's line of Dirt & Air Separators (DAS) are designed to eliminate entrained air and suspended dirt particles associated with the start-up and maintenance of hydronic systems. The units incorporate a robust stainless steel coalescing medium which directs dirt particles of all sizes to the collection chamber at the bottom, and allows the air to be released through an air vent at the top.

For applications with high pipe velocity and flow, Armstrong's DASH (High Velocity) unit allows increased flow capacity for the same connection size.

The DAS Series is available with either a welded or removable head, both of which conform to ASME Section VIII, Div. 1. The welded head design is also available, for a price reduction, as a non-ASME rated unit. All models are available with NPT connections up to 4".

### System Advantages

- Air and dirt removed with one unit
- Decreased corrosion, pump cavitation and wear of system components
- Bypass/isolation valves, filters and other flow reducing components eliminated
- Less maintenance
- Greater owner satisfaction

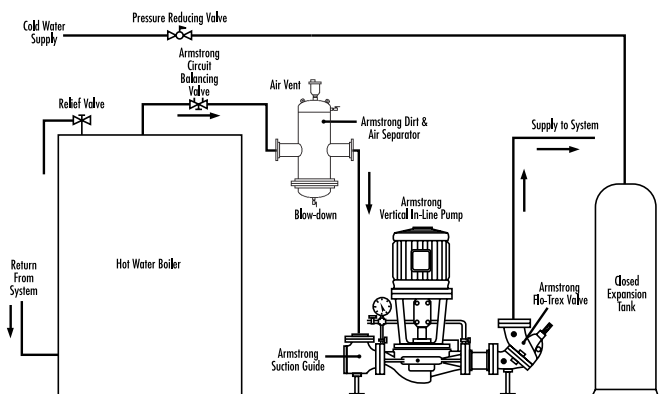
### Unit Advantages

- Robust stainless steel coalescing medium
- ASME rated units as standard
- High pressure units and larger than 12" connection sizes available upon request
- Dirt particles can be flush and air vent cleaned/replaced during system operation
- Minimal pressure drop with no fluctuations
- Quiet operation
- Faster air removal than vortex separators
- Velocity independent air removal

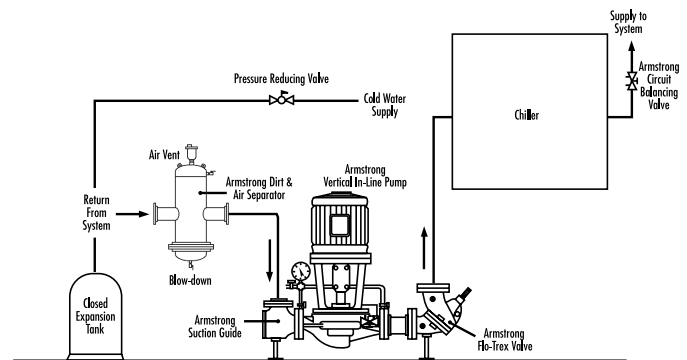


### Installation Schematics

Armstrong Dirt & Air Separators should be installed at the highest temperature and the lowest pressure points in the system. Where this is not possible, the best location is at the point of highest temperature. Ideally, a separator should be located on the outlet side of the boiler, and the suction side of the pump.

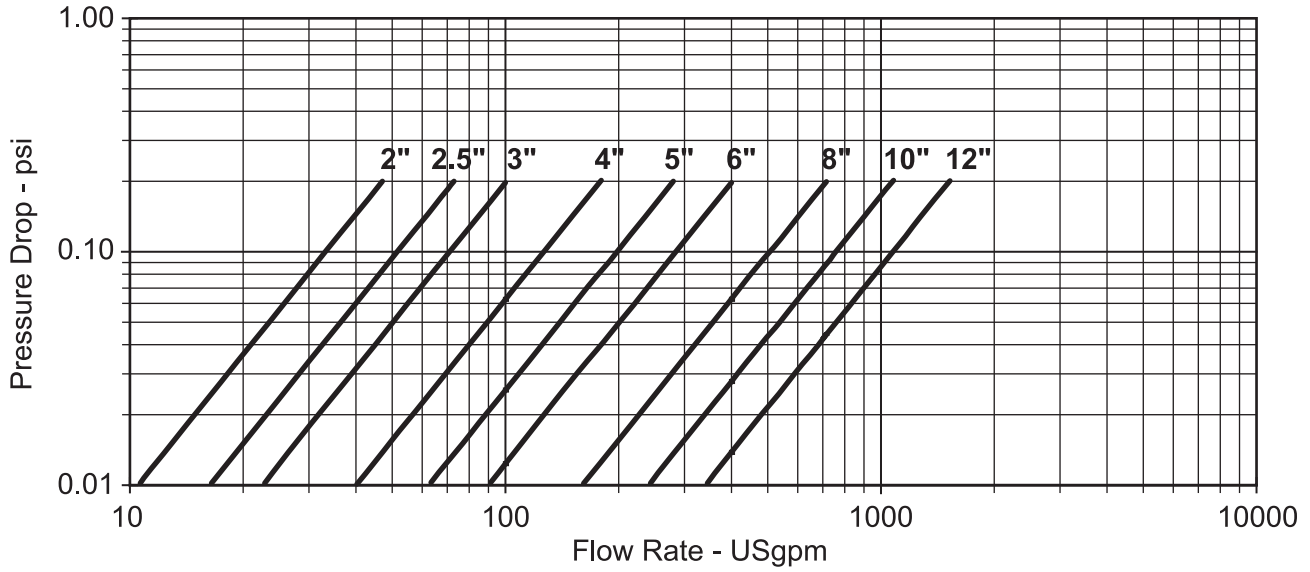


**For Boiler Applications**

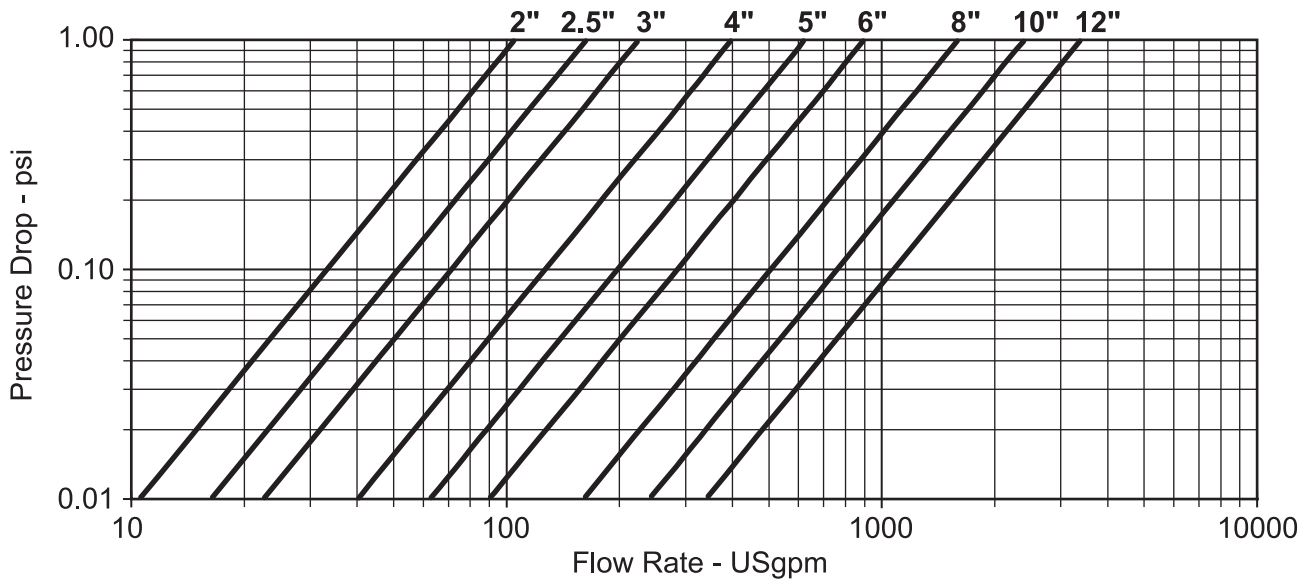


**For Chiller Applications**

### Pressure Drop Chart for DAS Models



### Pressure Drop Chart for DASH Models



S. A. Armstrong Limited  
 23 Bertrand Avenue  
 Toronto, Ontario  
 Canada, M1L 2P3  
 T: (416) 755-2291  
 F (Main): (416) 759-9101

Armstrong Pumps Inc.  
 93 East Avenue  
 North Tonawanda, New York  
 U.S.A., 14120-6594  
 T: (716) 693-8813  
 F: (716) 693-8970

Armstrong Holden Brooke Pullen  
 Wenlock Way  
 Manchester  
 United Kingdom, M12 5JL  
 T: +44 (0) 1612 232223  
 F: +44 (0) 1612 209660



© S.A. Armstrong Limited 2005

For Armstrong locations worldwide, please visit [www.armstrongpumps.com](http://www.armstrongpumps.com)