



Lochinvar[®]
High Efficiency Water Heaters, Boilers and Pool Heaters

**KNIGHT XL
COMMERCIAL BOILER
Submittal Sheet**

KBX-Sub-02

KNIGHT[®] XL COMMERCIAL CONDENSING HEATING BOILERS

JOB NAME _____

LOCATION _____

ARCH./ENGR. _____

WHOLESALE _____

MECH. CONTRACTOR _____

MODEL NO. _____

TYPE GAS _____

Btu/hr INPUT _____

Btu/hr OUTPUT _____

NOTES

Standard Features

- Up to 94.6% Thermal Efficiency (KBN399-800)
- Modulating Burner with 5:1 Turndown
- ASME Stainless Steel Heat Exchanger
- Gasketless Heat Exchanger Design
- 50 psi Relief Valve
- SMART SYSTEM[™] Operating Control, with:
 - Digital Operating Control
 - 2-Line, 16-Character LCD Display
 - Password Security
 - Outdoor Reset
 - 3-Pump Control (Boiler, System and DHWP)
 - Built-in Sequencing for 2-8 Boilers
 - 0 – 10 Vdc Input Control
 - Product Service Indicator
 - Time Clock
 - PC Connection Port
- Inlet & Outlet Temperature Sensors
- Easy-Access Terminal Strip
- Low-Water Flow Indication
- Adjustable High Limit w/ Manual Reset
- Contacts on Any Failure
- Flow Switch
- Pump Relay with Freeze Protection
- Direct-Spark Ignition
- Low-NOx Operation
- Natural to LP Gas Conversion Kit
- Direct-Vent Sealed Combustion
- PVC, CPVC and Stainless Steel Venting up to 100 Feet
- Sidewall Vent Terminals
- Zero Clearance to Combustibles
- Adjustable Leveling Legs
- 10-Year Limited Warranty (See Warranty for Details)

Optional Equipment

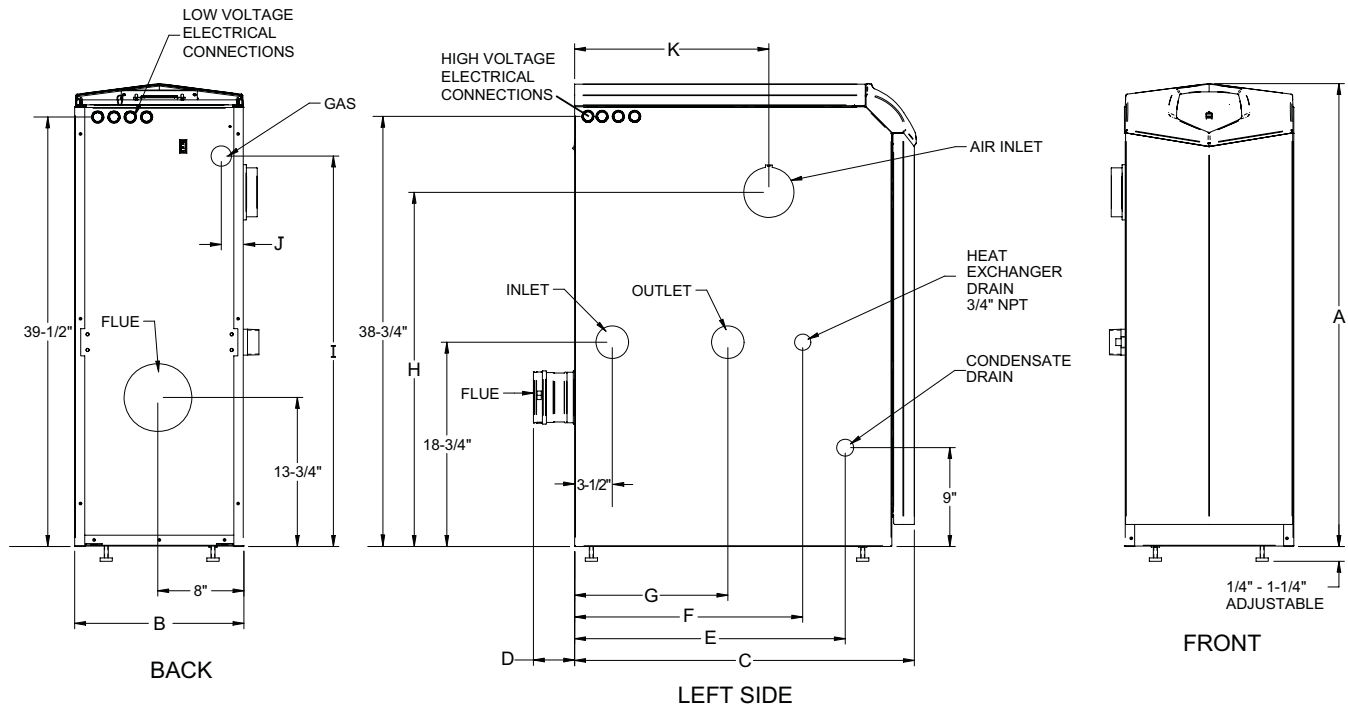
Place an X in the box by all options that apply

- Alarm Bell on Any Failure
- Condensate Neutralization Kit
- Concentric Vent Kit (KB 399-600)
- Low and High Gas Pressure Switch
w/ Manual Reset (KB500-800)
- Multi-Stack Frame (KBN models only)
- SMART SYSTEM[™] PC Software
- SMART SYSTEM[™] Pocket PC Software

Firing Control Systems

- M9 Standard
- M7 California Code
- M13 GE GAP/FM/CSD1 (KB500-800)

KNIGHT XL Commercial Boiler Dimensions & Specifications



KNIGHT XL Commercial Boiler Dimensions & Specifications

Model Number	Input		Thermal Efficiency %	NET Output MBH	NET I=B=R MBH	A	B	C	D	E	F	G	H	I	J	K	Gas Conn.	Water Conn.	Air Inlet	Vent Size	Shipping Wt. (lbs.)
	Min MBH	Max MBH																			
KBN399	80	399	93.3	372	324	42-1/2"	15-1/2"	27"	3-3/4"	21"	20-3/4"	14"	34"	34"	2"	18-3/4"	1"	1-1/2"	4"	4"	285
KBN500	100	500	93.3	467	406	42-1/2"	15-1/2"	31-1/4"	3-3/4"	21"	25"	14"	35"	35"	2"	22"	1"	1-1/2"	4"	4"	305
KBN600	120	600	94.6	567	493	42-1/2"	15-1/2"	36-1/4"	3-3/4"	21"	25"	14"	36"	32-3/4"	5-1/2"	19-1/2"	1"	2"	4"	4"	355
KBN700	140	700	94.3	660	574	42-1/2"	15-1/2"	40-1/4"	3"	23"	29"	17"	36"	32-3/4"	3-1/4"	23-1/2"	1"	2"	4"	6"	395
KBN800	160	800	94.0	752	654	42-1/2"	15-1/2"	45-1/4"	3"	23"	33-1/4"	17"	36"	32-3/4"	3-1/4"	27-3/4"	1"	2"	4"	6"	440

Notes: Change 'N' to 'L' for L.P. Gas Model. No deration on L.P. models. Performance data based on manufacturer test results. 120 VAC / 15 AMP circuit required. All dimensions shown in inches



Lochinvar Corporation • 300 Maddox Simpson Pkwy • Lebanon, TN 37090 • 615-889-8900 / Fax: 615-547-1000

www.Lochinvar.com